

LEASEHOLD - SHARE OF



Apartment

**FLAT 21, MARSHAM  
COURT MARSHAM  
STREET, LONDON,  
SW1P 4JY**

**£475,000**

FEATURES



**TUCKERMAN**  
ESTATE AGENTS  
PROPERTY PROFESSIONALS

# 0 Bedroom Apartment located in London

A fantastic studio apartment located in this prestigious development in central Westminster.

Call us on

020 7222 5510

[info@tuckermanresidential.co.uk](mailto:info@tuckermanresidential.co.uk)

[www.tuckermanresidential.co.uk](http://www.tuckermanresidential.co.uk)

Council Tax Band

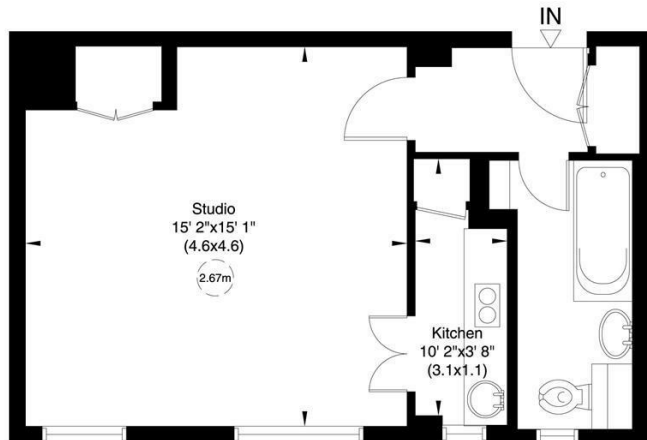
D

## 21 Marsham Court, Marsham Street, SW1

Approximate Gross Internal Area

34 sq m/ 364 sq ft

Not to Scale, for identification only



Fifth Floor

Energy Efficiency Rating		Current	Potential
<i>Very energy efficient - lower running costs</i>			
(92 plus) A			
(81-91) B			
(69-80) C		73	78
(55-68) D			
(39-54) E			
(21-38) F			
(1-20) G			
<i>Not energy efficient - higher running costs</i>			
<b>England &amp; Wales</b>		EU Directive	2002/91/EC

Agents Note: Whilst every care has been taken to prepare these particulars, they are for guidance purposes only. All measurements are approximate and are for general guidance purposes only and whilst every care has been taken to ensure their accuracy, they should not be relied upon and potential buyers are advised to recheck the measurements.

For guidance only and must not be relied upon as a statement of fact.  
All measurements and areas are approximate only (and have been prepared in accordance with the current edition of the RICS Code of Measuring Practice).



**TUCKERMAN**  
ESTATE AGENTS  
PROPERTY PROFESSIONALS